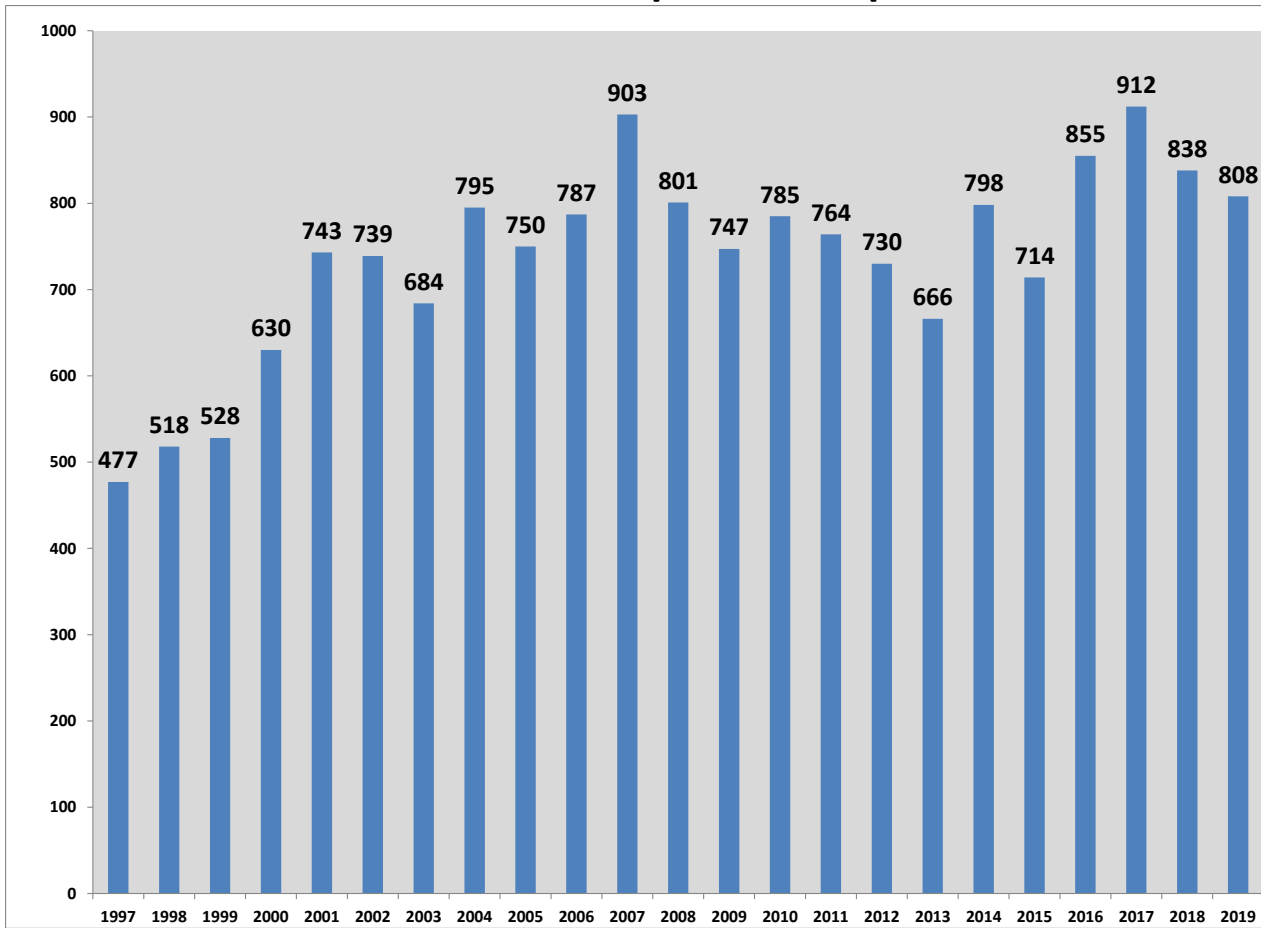


OCONEE COUNTY FIRE RESCUE

Year 2019

Type of Call	Number of Calls	Average Response Time
Structure Fires	16	7.75
Structure Fires - Out Upon Arrival	14	8.14
Structure Fires – Other Counties	2	N/A
Vehicle Fires and Farm Equipment	29	8.03
Vehicle Fires and Farm Equipment – Other Counties	2	N/A
Grass, Woods and Hay Fires	36	8.83
Alarm Activations	147	9.02
Smoke Scares	26	7.15
Control Burns	27	8.41
Haz-Mat and Power Line Calls	106	9.86
Haz-Mat and Power Line Calls – Other Counties	1	N/A
Automobile Accidents	226	6.57
Medical Assist	3	10.33
Non-Emergency Service Calls	55	N/A
Fire Calls Canceled Enroute	118	N/A
TOTAL CALLS	808	8.08 Minutes

23-Year Fire Call Response Comparison



1997 (477 Calls)

1998 (518 Calls)

1999 (628 Calls)

2000 (630 Calls)

2001 (743 Calls)

2002 (739 Calls)

2003 (684 Calls)

2004 (795 Calls)

2005 (750 Calls)

2006 (787 Calls)

2007 (903 Calls)

2008 (801 Calls)

2009 (747 Calls)

2010 (785 Calls)

2011 (764 Calls)

2012 (730 Calls)

2013 (666 Calls)

2014 (798 Calls)

2015 (714 Calls)

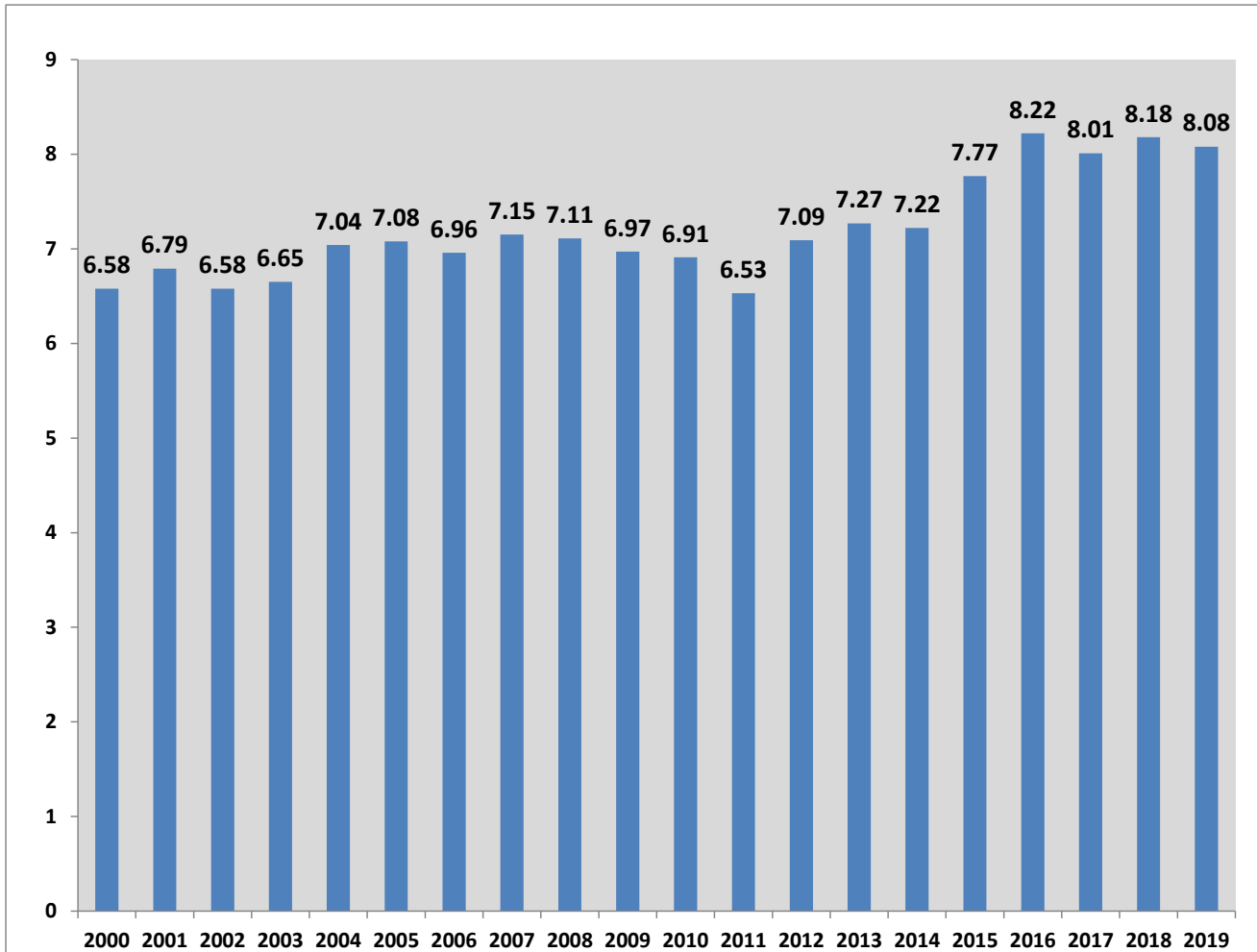
2016 (855 Calls)

2017 (912 Calls)

2018 (838 Calls)

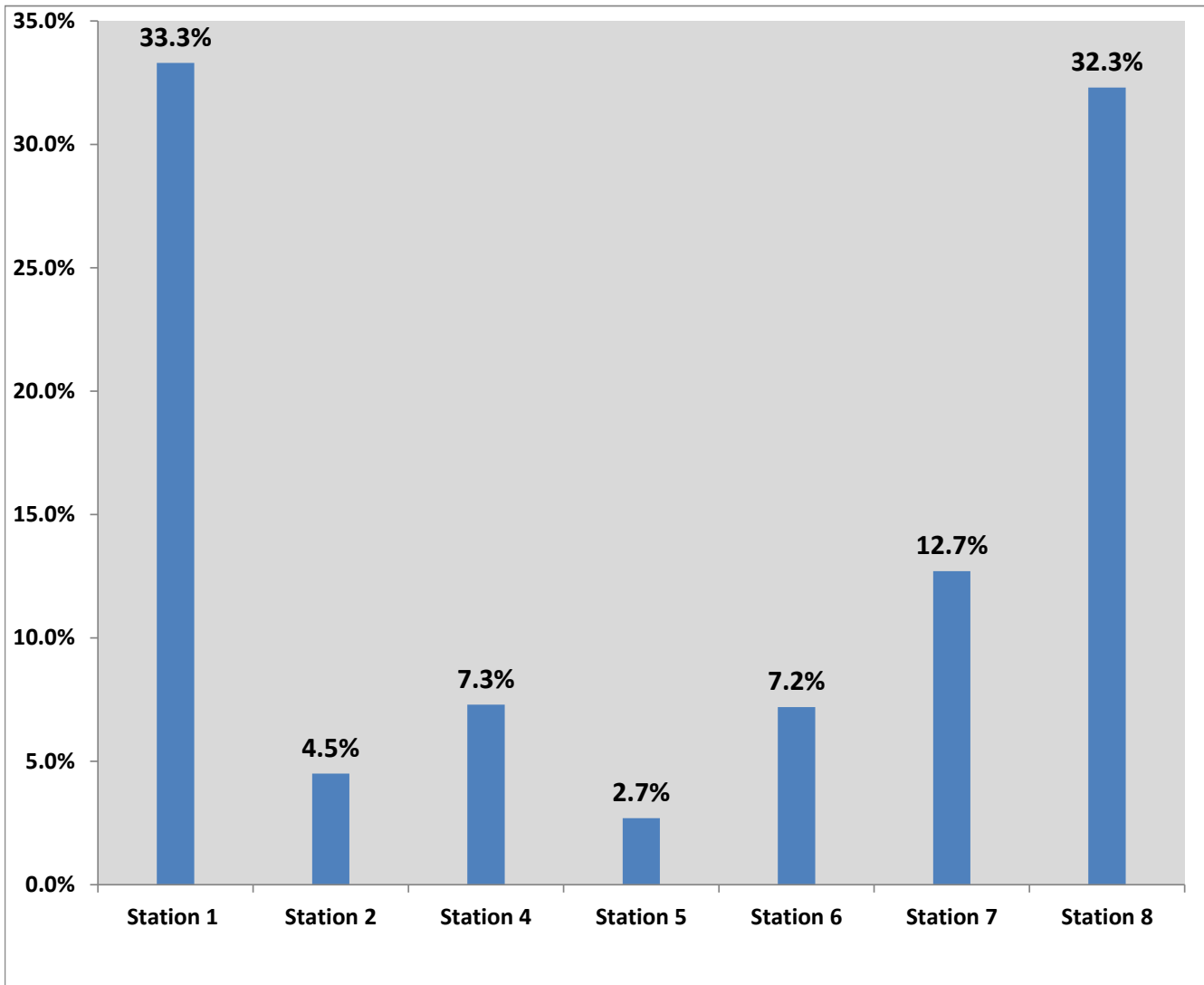
2019 (808 Calls)

20-Year Annual Fire Rescue Emergency Call Response Times



2000 = 6.58 Minutes
2001 = 6.79 Minutes
2002 = 6.58 Minutes
2003 = 6.65 Minutes
2004 = 7.04 Minutes
2005 = 7.08 Minutes
2006 = 6.96 Minutes
2007 = 7.15 Minutes
2008 = 7.11 Minutes
2009 = 6.97 Minutes
2010 = 6.91 Minutes
2011 = 6.53 Minutes
2012 = 7.09 Minutes
2013 = 7.27 Minutes
2014 = 7.22 Minutes
2015 = 7.77 Minutes
2016 = 8.22 Minutes
2017 = 8.01 Minutes
2018 = 8.18 Minutes
2019 = 8.08 Minutes

2019 Fire Calls by Area of Protection



Station 1 - Watkinsville = 269 Fire Calls

Station 2 - South Oconee = 36 Fire Calls

Station 4 - Dark Corner = 59 Fire Calls

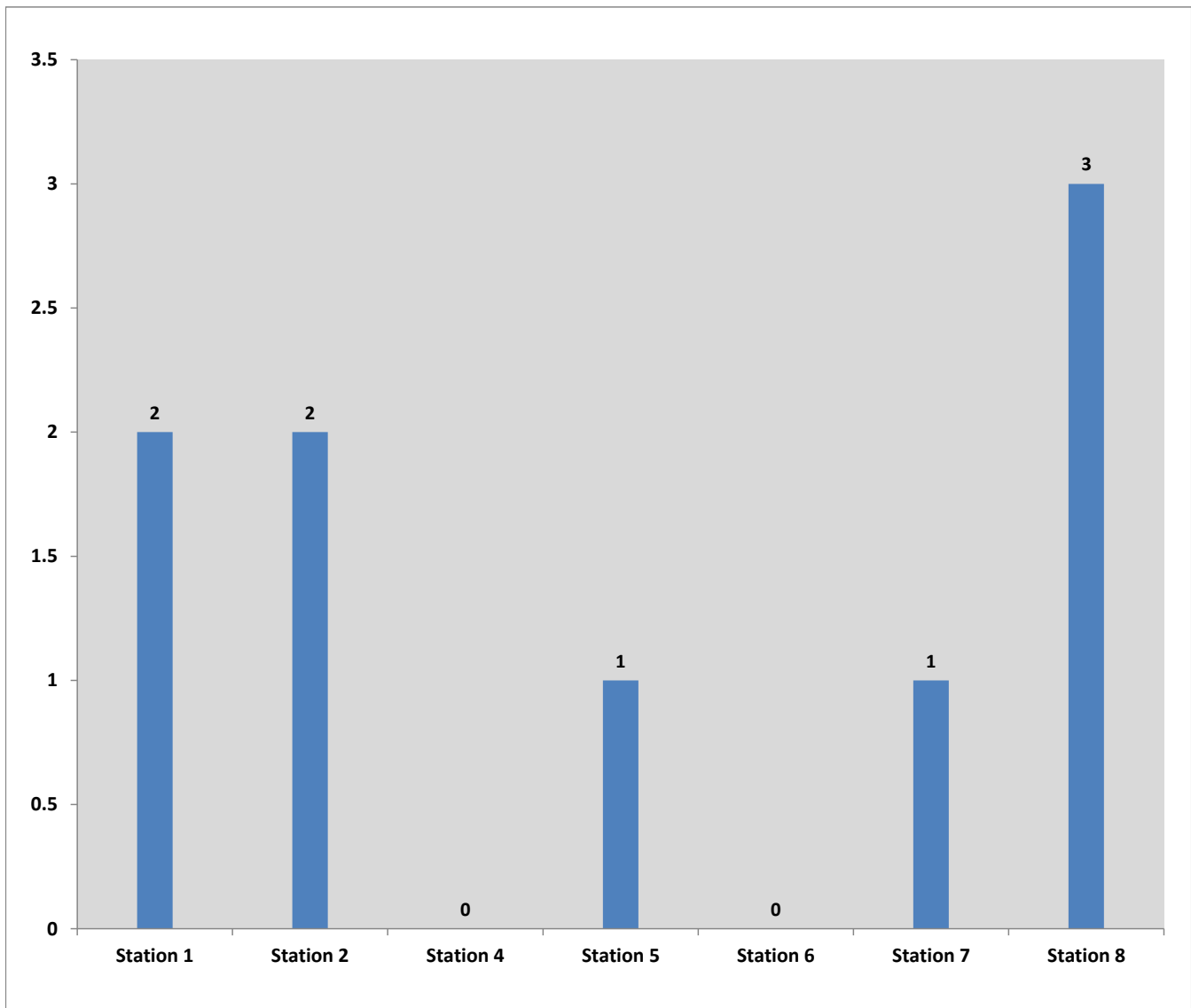
Station 5 - East Oconee = 22 Fire Calls

Station 6 - High Shoals = 58 Fire Calls

Station 7 - North Oconee = 103 Fire Calls

Station 8 - Barber Creek = 261 Fire Calls

2019 Location of Auto Accident Extrication Scenes



Station 1 - Watkinsville = (2)

Station 2 - South Oconee = (2)

Station 4 - Dark Corner = (0)

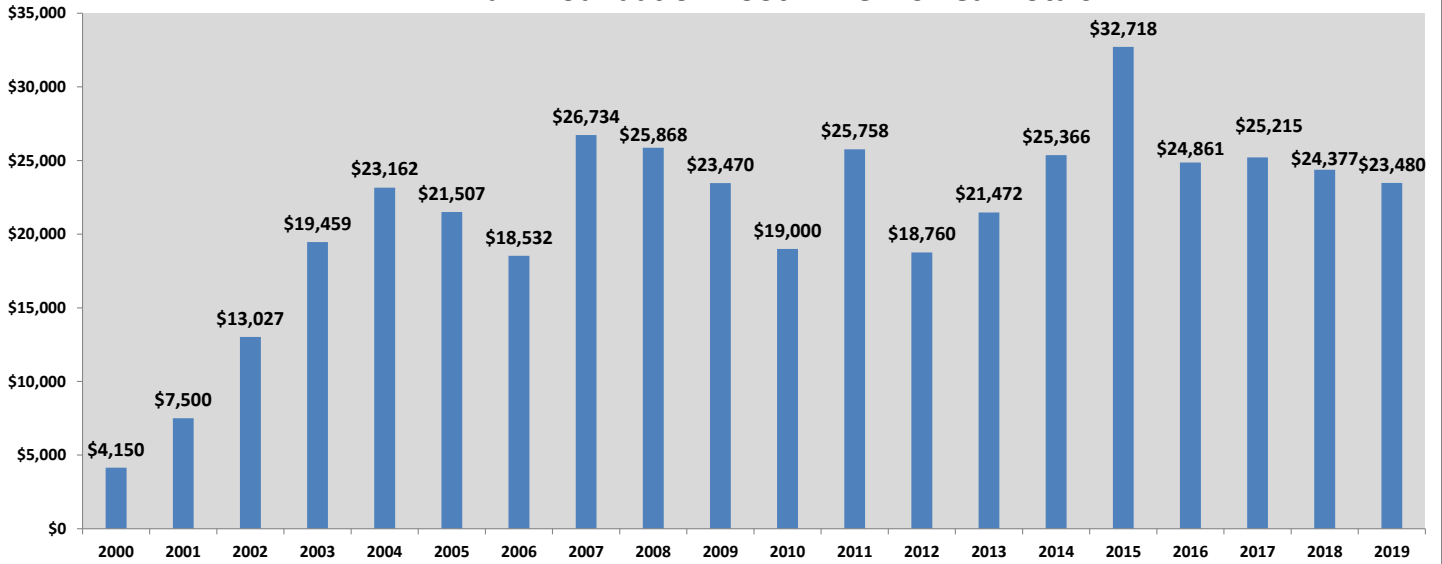
Station 5 - East Oconee = (1)

Station 6 - High Shoals = (0)

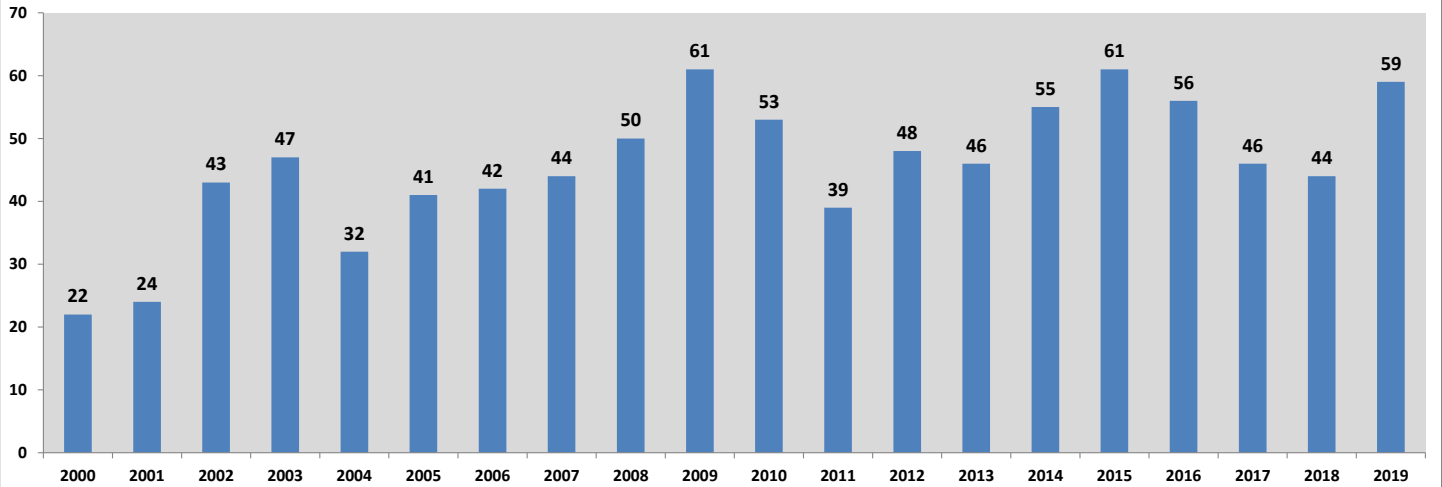
Station 7 - North Oconee = (1)

Station 8 - Barber Creek = (3)

Burn Foundation Boot Drive: 20-Year Totals

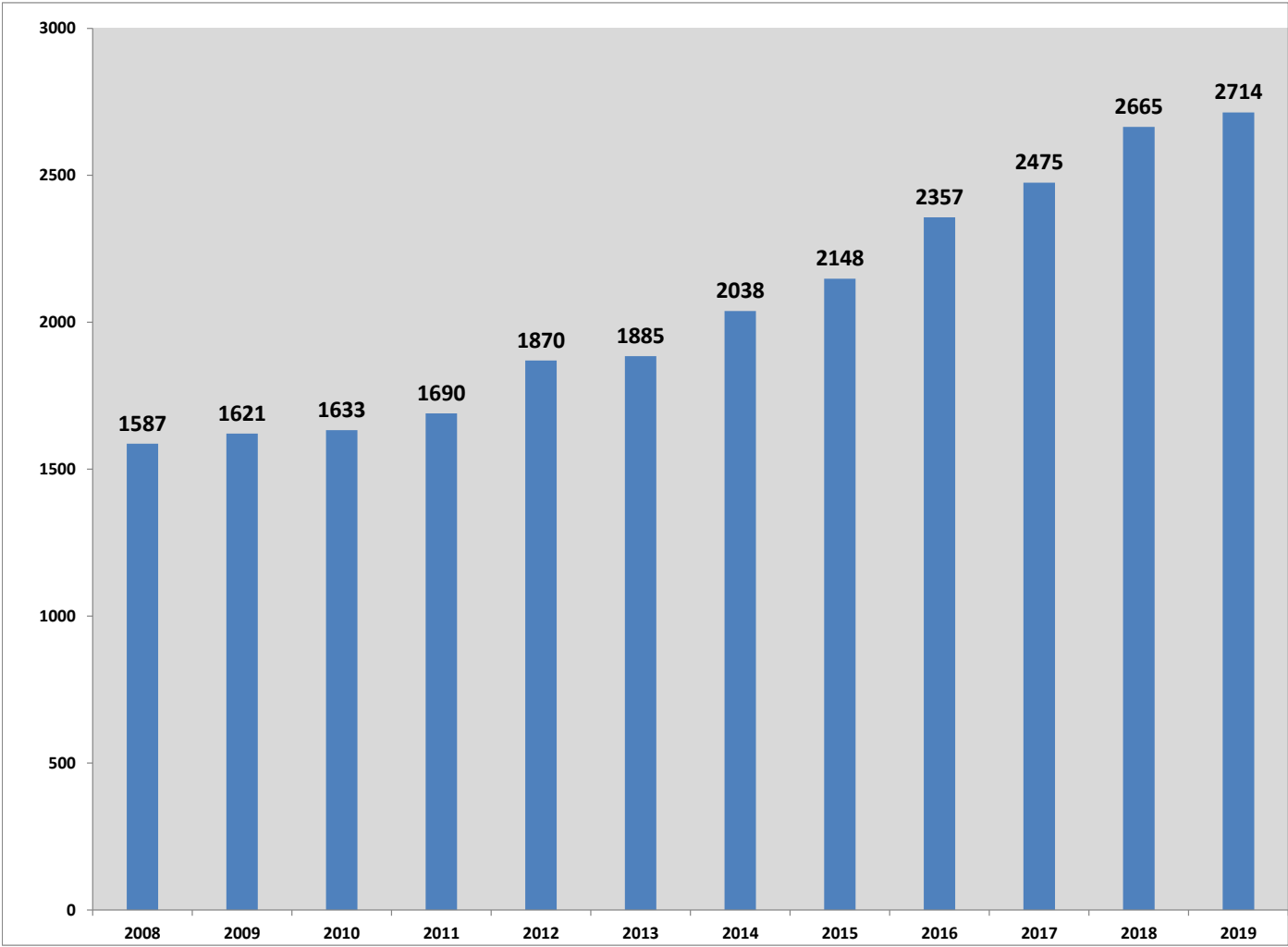


Participation By Oconee County Fire Rescue Members



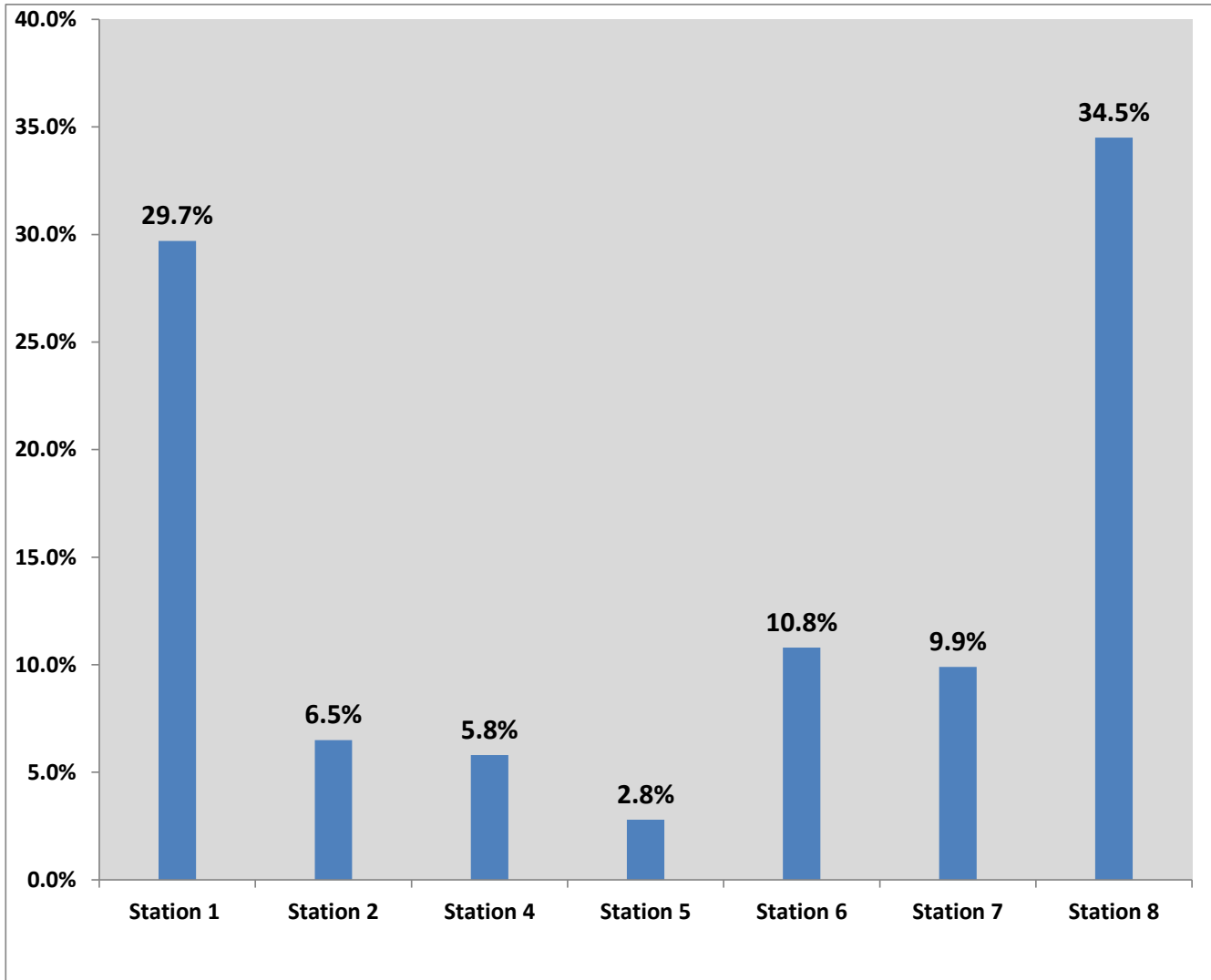
- Year 2000 - 29th in State
- Year 2001 - 21st in State
- Year 2002 - 18th in State
- Year 2003 - 12th in State
- Year 2004 - 8th in State
- Year 2005 - 11th in State
- Year 2006 - 14th in State
- Year 2007 - 8th in State
- Year 2008 - 5th in State
- Year 2009 - 9th in State
- Year 2010 - 11th in State
- Year 2011 - 10th in State
- Year 2012 - 10th in State
- Year 2013 - 6th in State
- Year 2014 - 5th in State
- Year 2015 - 8th in State
- Year 2016 - 7th in State
- Year 2017 - 7th in State
- Year 2018 - 6th in State
- Year 2019 - ?th in State

12-Year Medical Call Response Comparison



2008 = 1587 Medical Calls
2009 = 1621 Medical Calls
2010 = 1633 Medical Calls
2011 = 1690 Medical Calls
2012 = 1870 Medical Calls
2013 = 1885 Medical Calls
2014 = 2038 Medical Calls
2015 = 2148 Medical Calls
2016 = 2357 Medical Calls
2017 = 2475 Medical Calls
2018 = 2665 Medical Calls
2019 = 2714 Medical Calls

2019 Medical Calls by Area of Protection



Station 1 - Watkinsville = 807 Medical Calls
Station 2 - South Oconee = 176 Medical Calls
Station 4 - Dark Corner = 157 Medical Calls
Station 5 - East Oconee = 75 Medical Calls
Station 6 - High Shoals = 293 Medical Calls
Station 7 - North Oconee = 270 Medical Calls
Station 8 - Barber Creek = 936 Medical Calls